



STATISTICAL REVIEW

KLAMATH COUNTY MLS RESIDENTIAL MARKET UPDATE

Monthly: Oct. 2008 – Oct. 2010
YTD: 2002 – 2010

Source: Klamath County Multiple Listing Service 11/18/2010

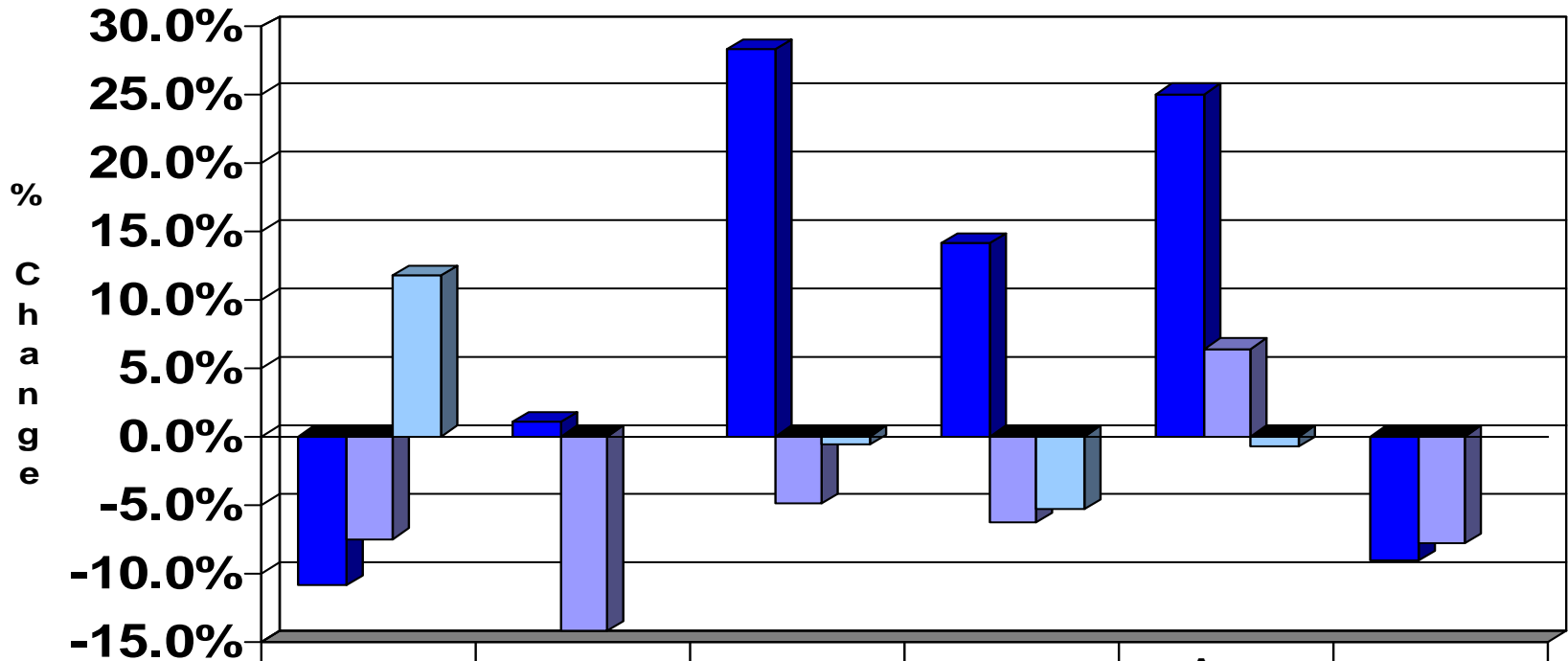
All Klamath County Area

(Based on residential listings and sales - excluding manufactured homes in parks)

© 2010 Coldwell Banker Holman Premier Realty

Residential Market Statistics

October 2010

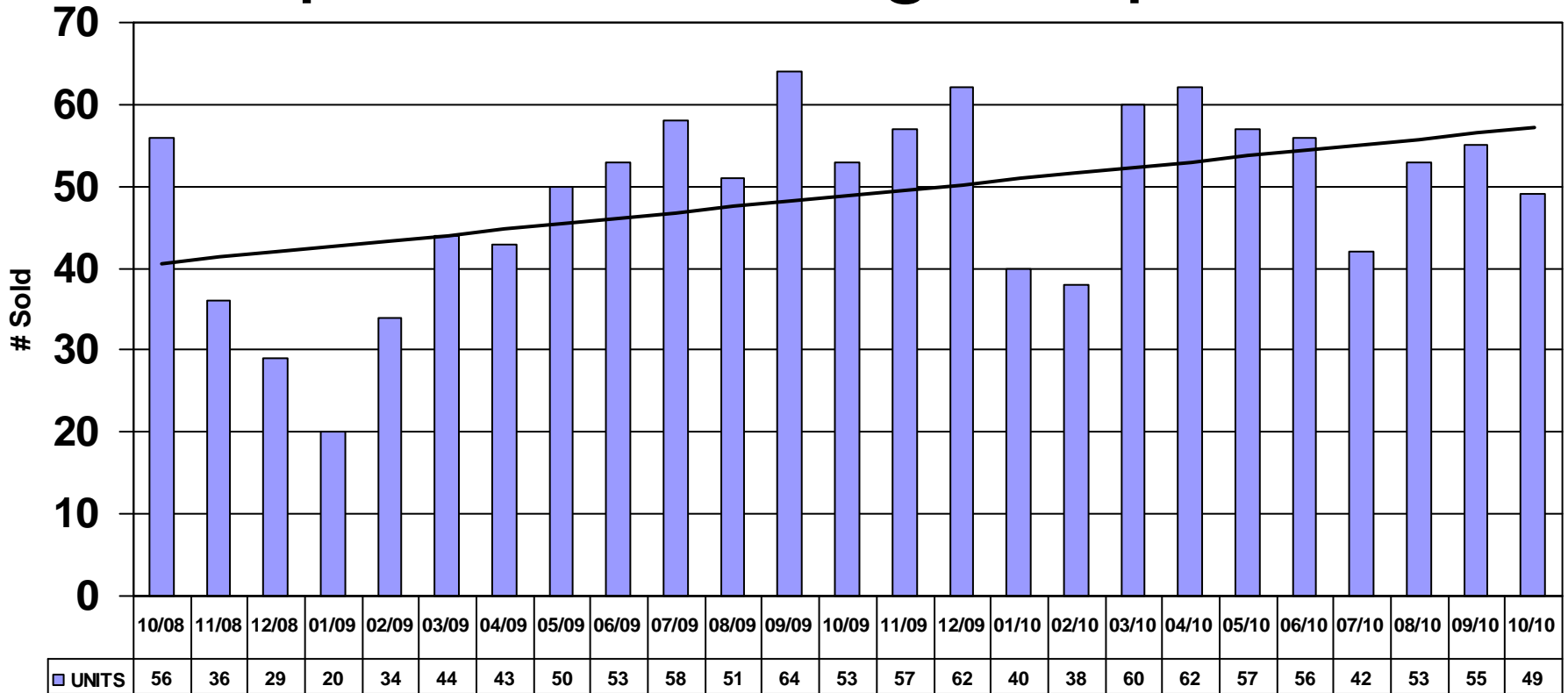


Oct. 2010 -Vs-

	Listings Sold	Pending Sales	Avg. DOM	Avg. Sales Price	Avg. Median Price	Active Listings
■ Sep-10	-10.9%	1.0%	28.3%	14.1%	25.0%	-9.1%
■ Oct-09	-7.5%	-14.3%	-4.9%	-6.3%	6.4%	-7.9%
■ YTD 09/10	11.7%		-0.6%	-5.4%	-0.8%	

■ Sep-10 ■ Oct-09 ■ YTD 09/10

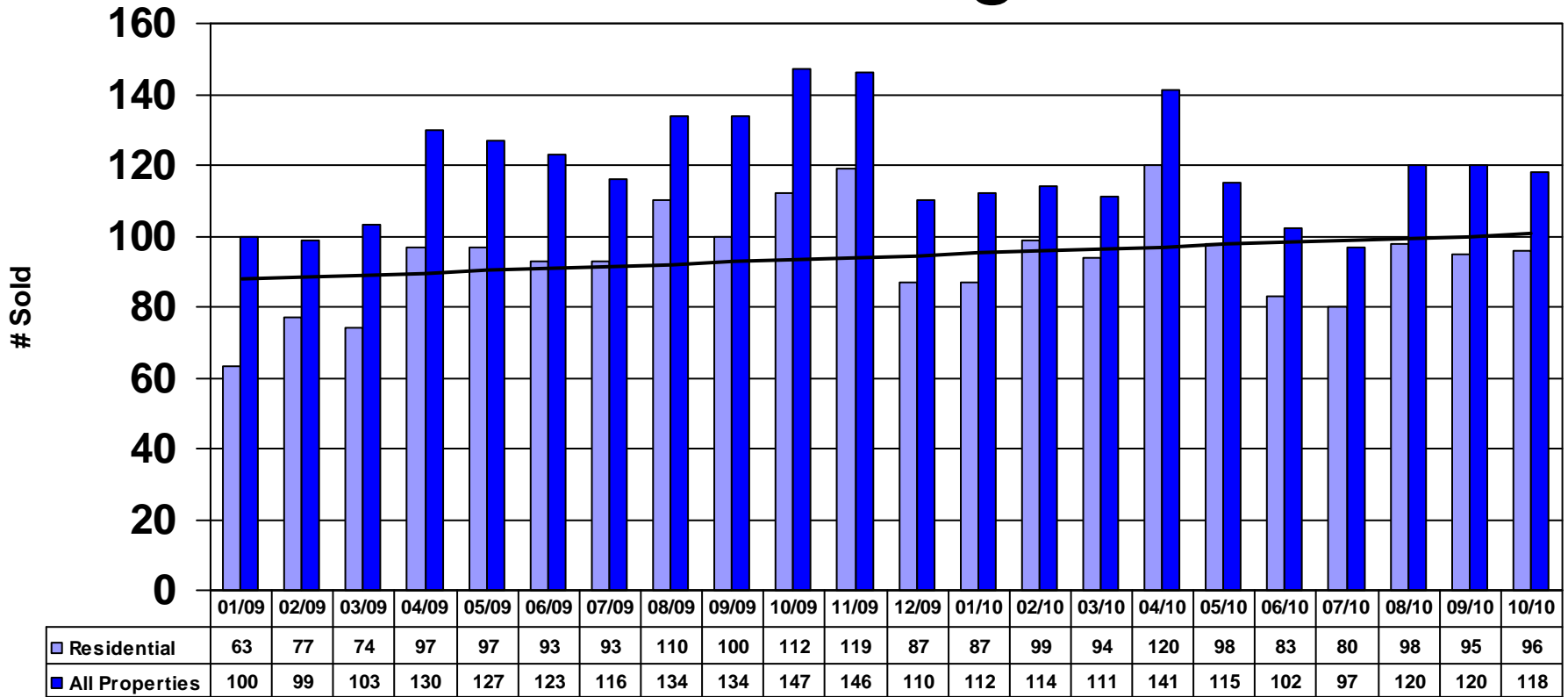
Residential Listings Sold Sep. 2008 Through Sep. 2010



UNITS — Linear (UNITS)

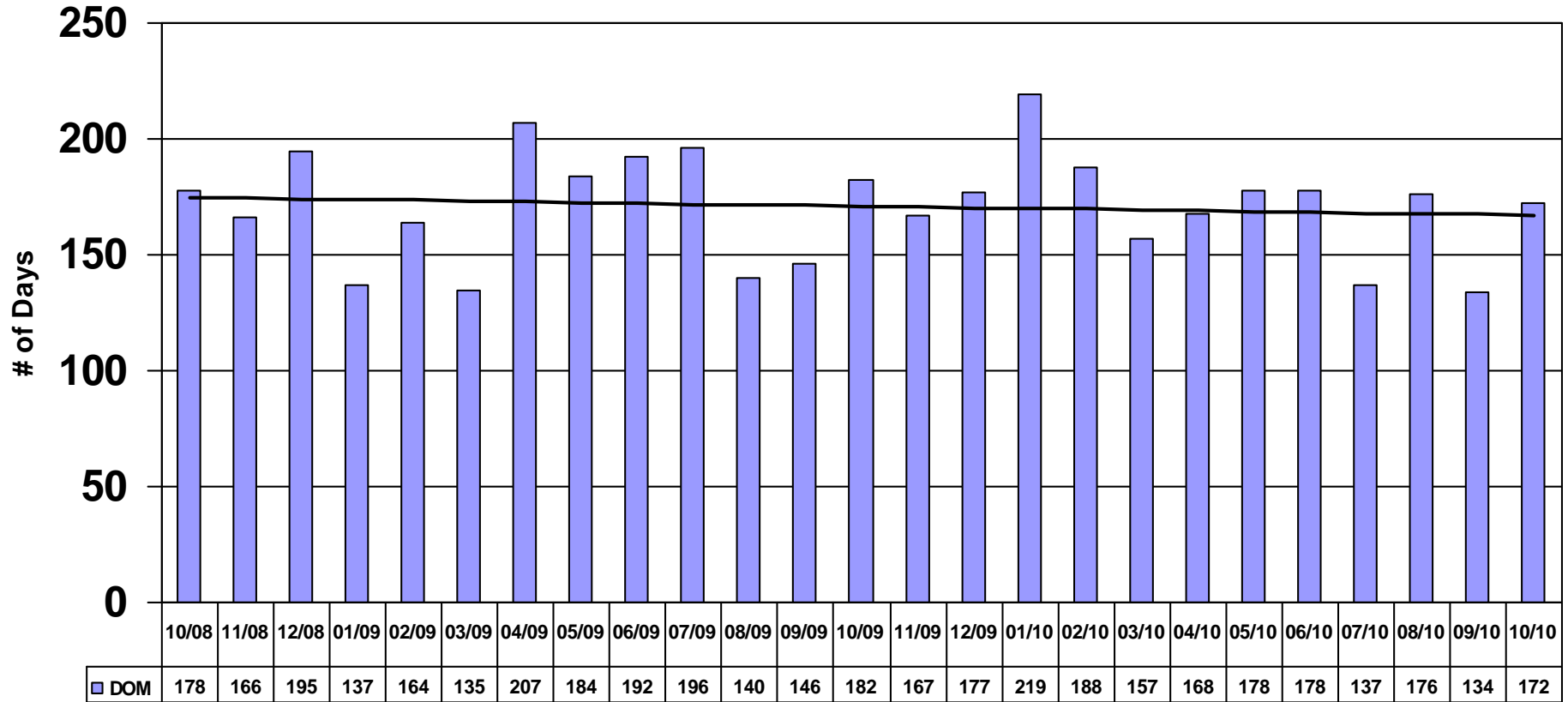
Pending Sales

Jan. 2009 Through Oct. 2010



Residential
 All Properties
 Linear (Residential)

Average Days On Market Oct. 2008 Through Oct. 2010

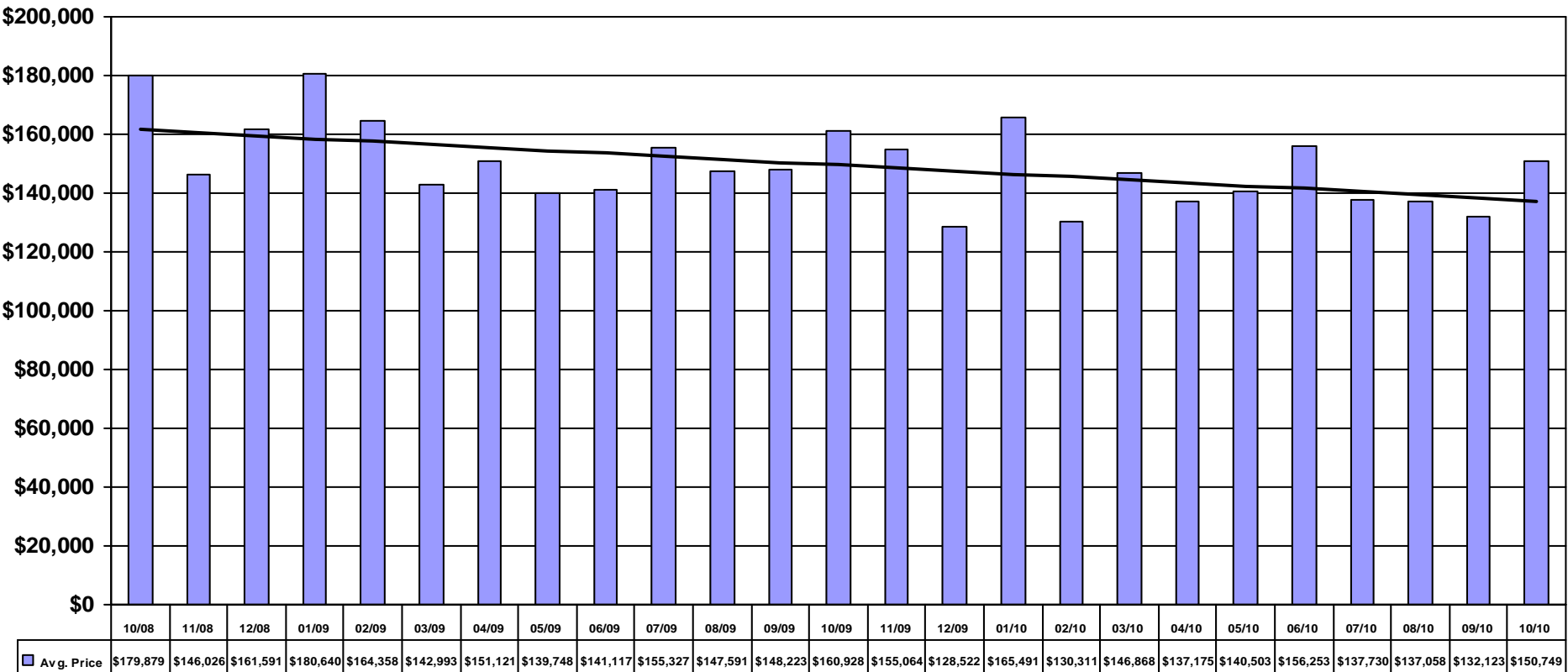


DOM

Linear (DOM)

Average Sales Price

Oct. 2008 Through Oct. 2010

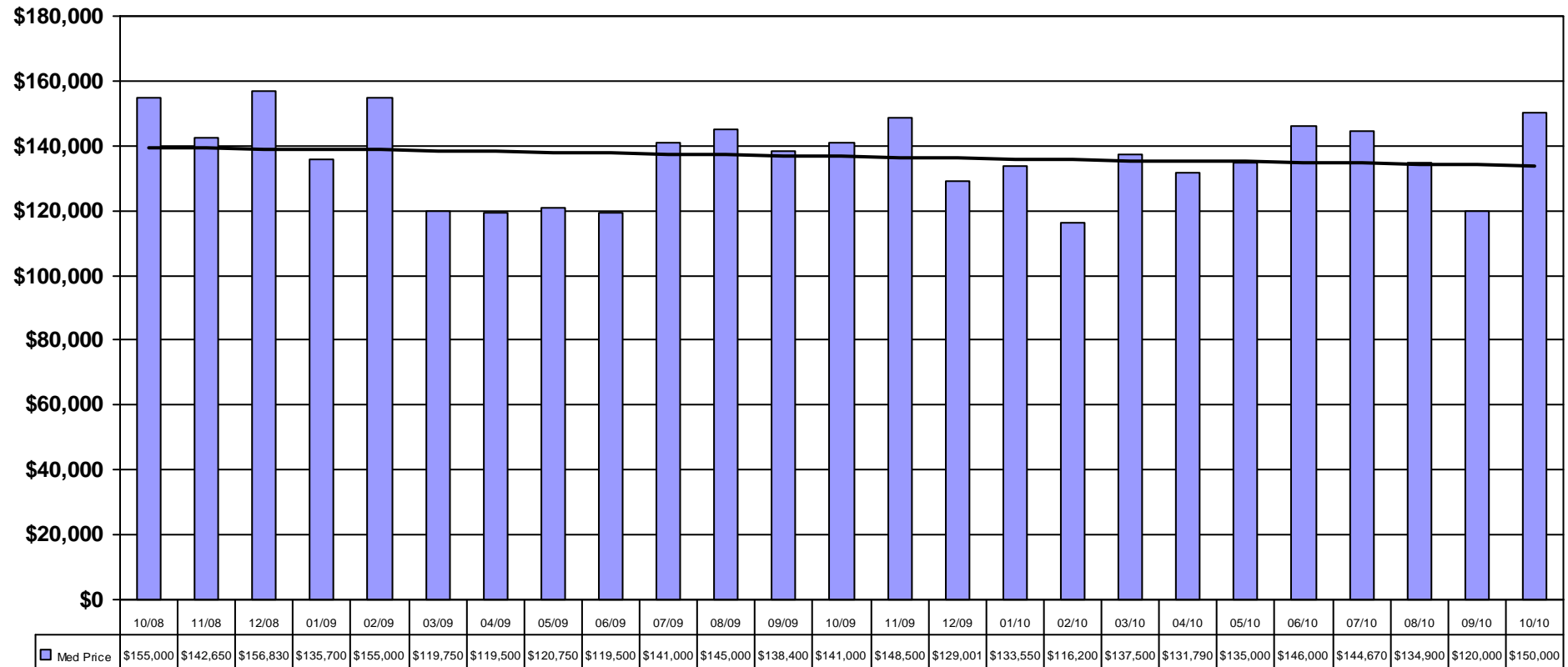


Avg. Price

Linear (Avg. Price)

Median Sales Price

Oct. 2008 Through Oct. 2010

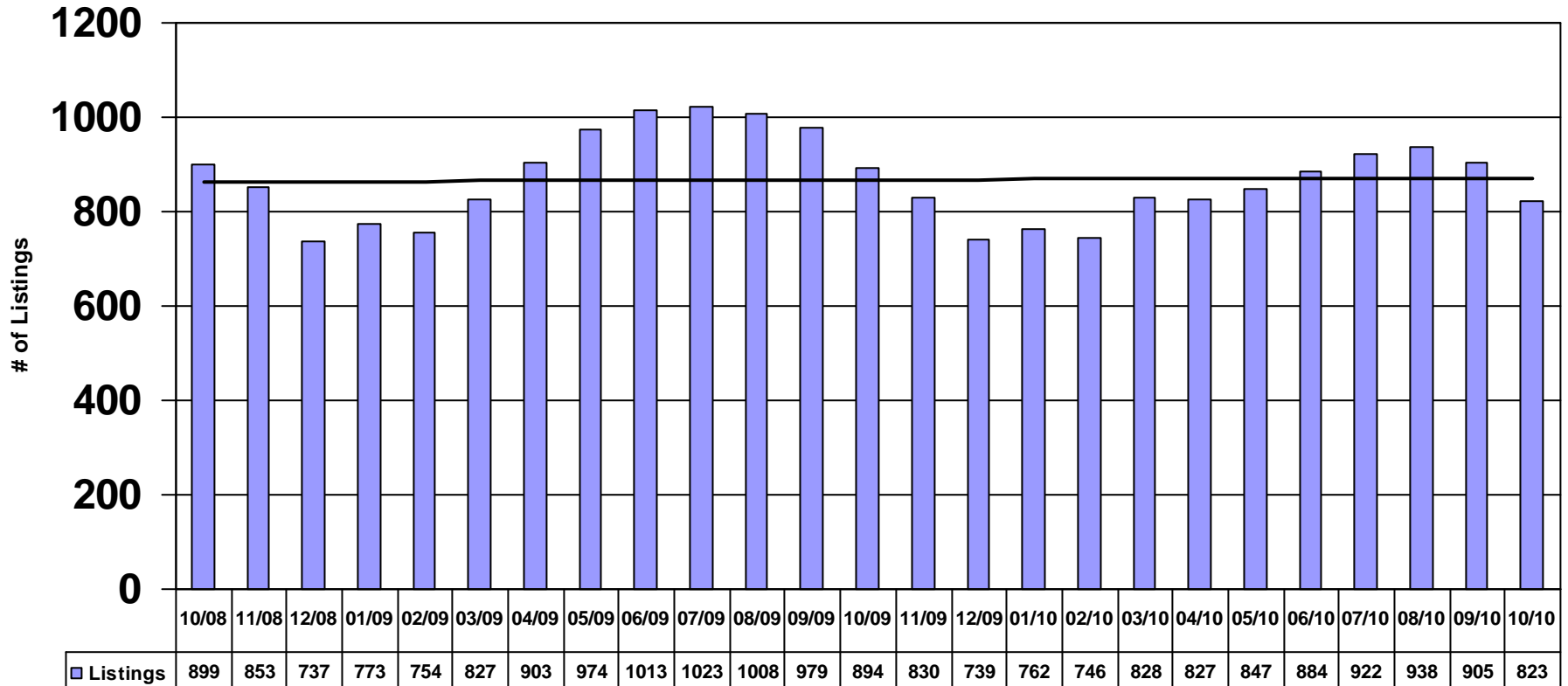


Med Price

Linear (Med Price)

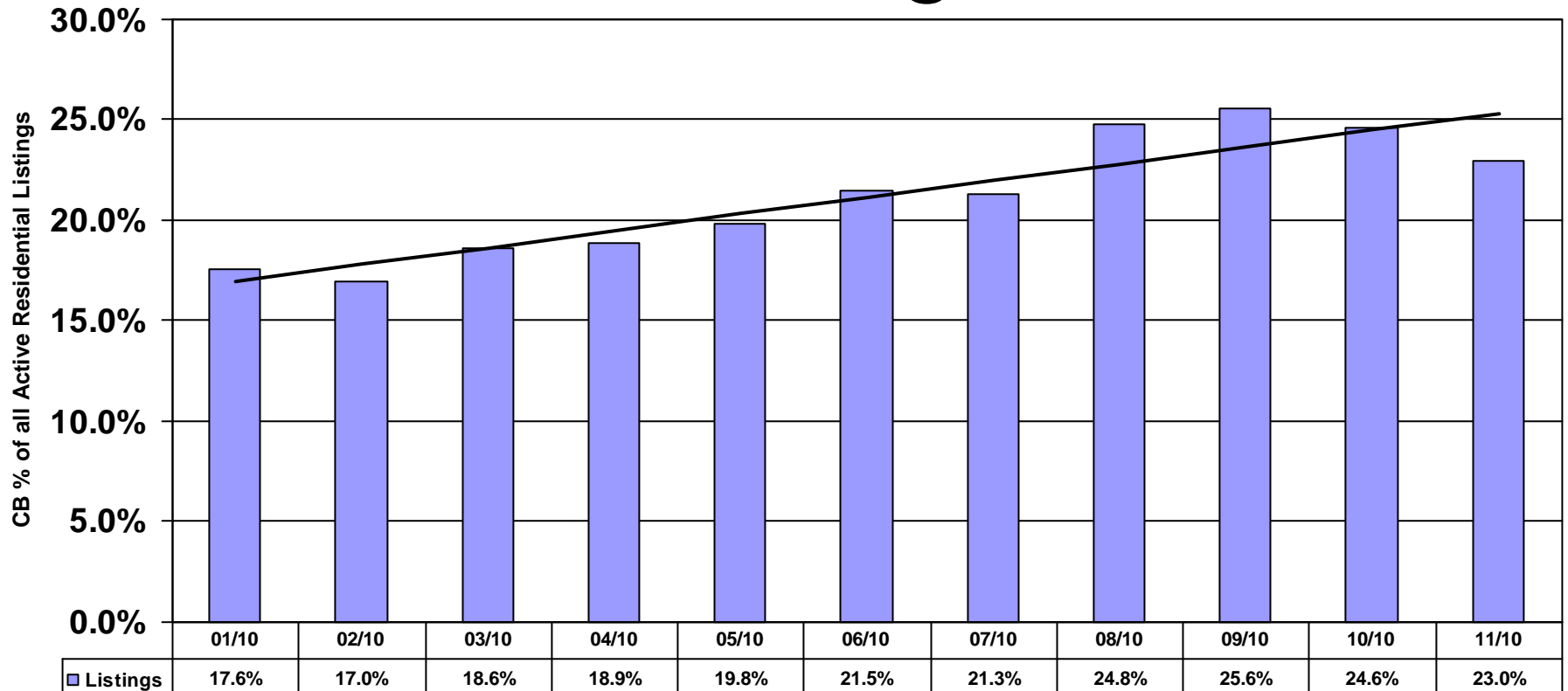
Active Residential Listings

Oct. 2008 Through Oct. 2010



■ Listings — Linear (Listings)

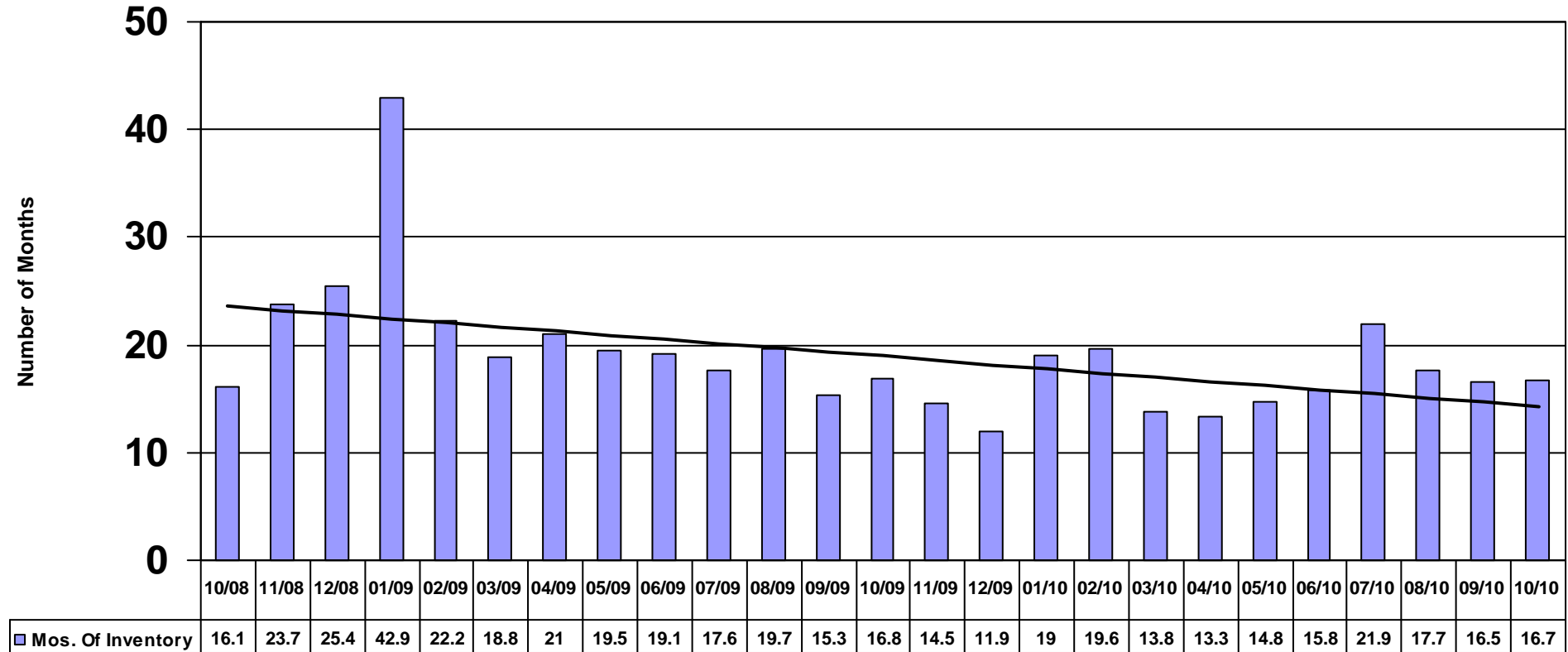
CB Active Residential Listings Jan. 2010 Through Oct. 2010



■ Listings — Linear (Listings)

Coldwell Banker active residential listings / ALL active residential listings = CB % of active residential listings

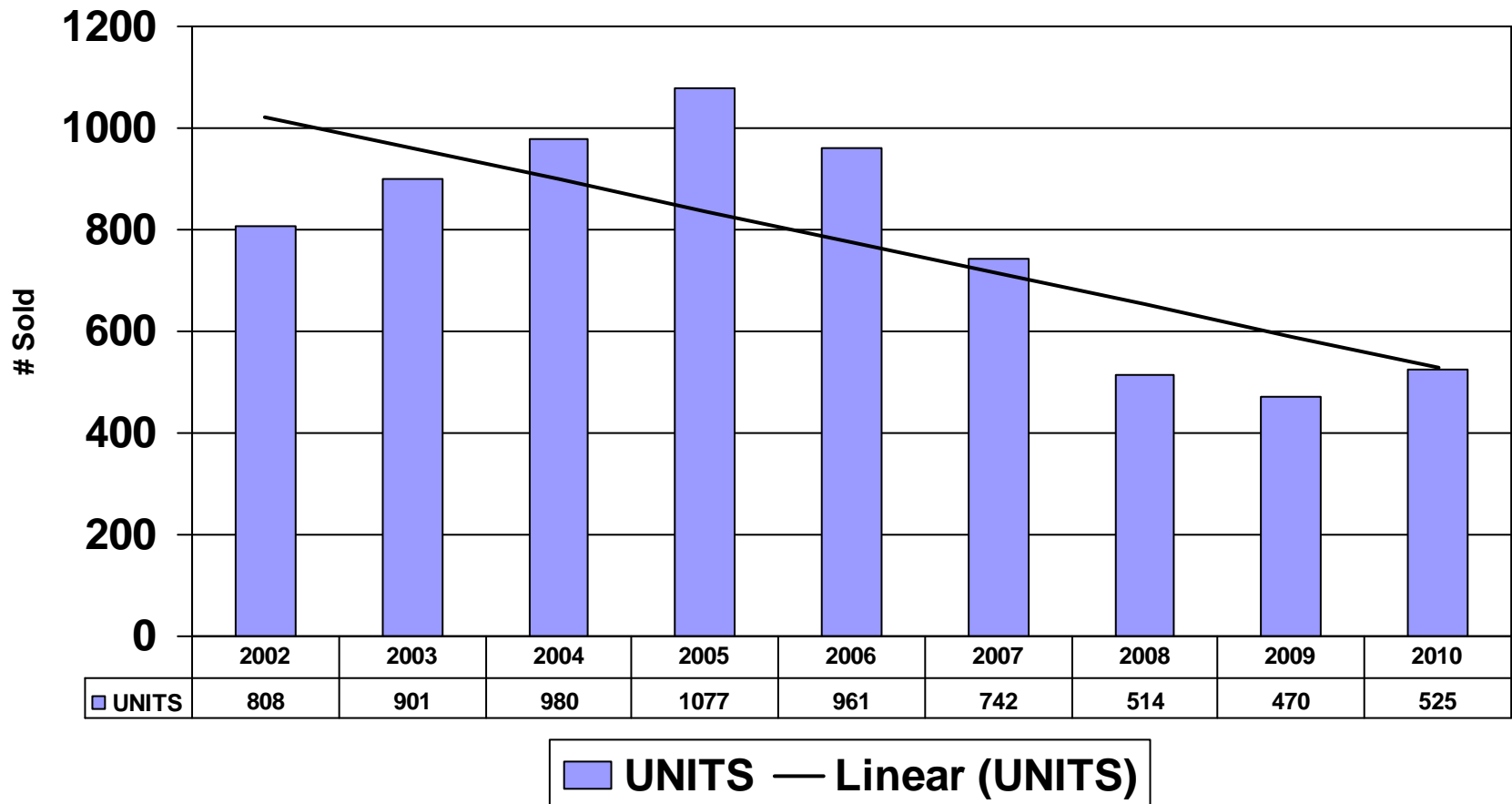
Residential Inventory Ratio Oct. 2008 Through Oct. 2010



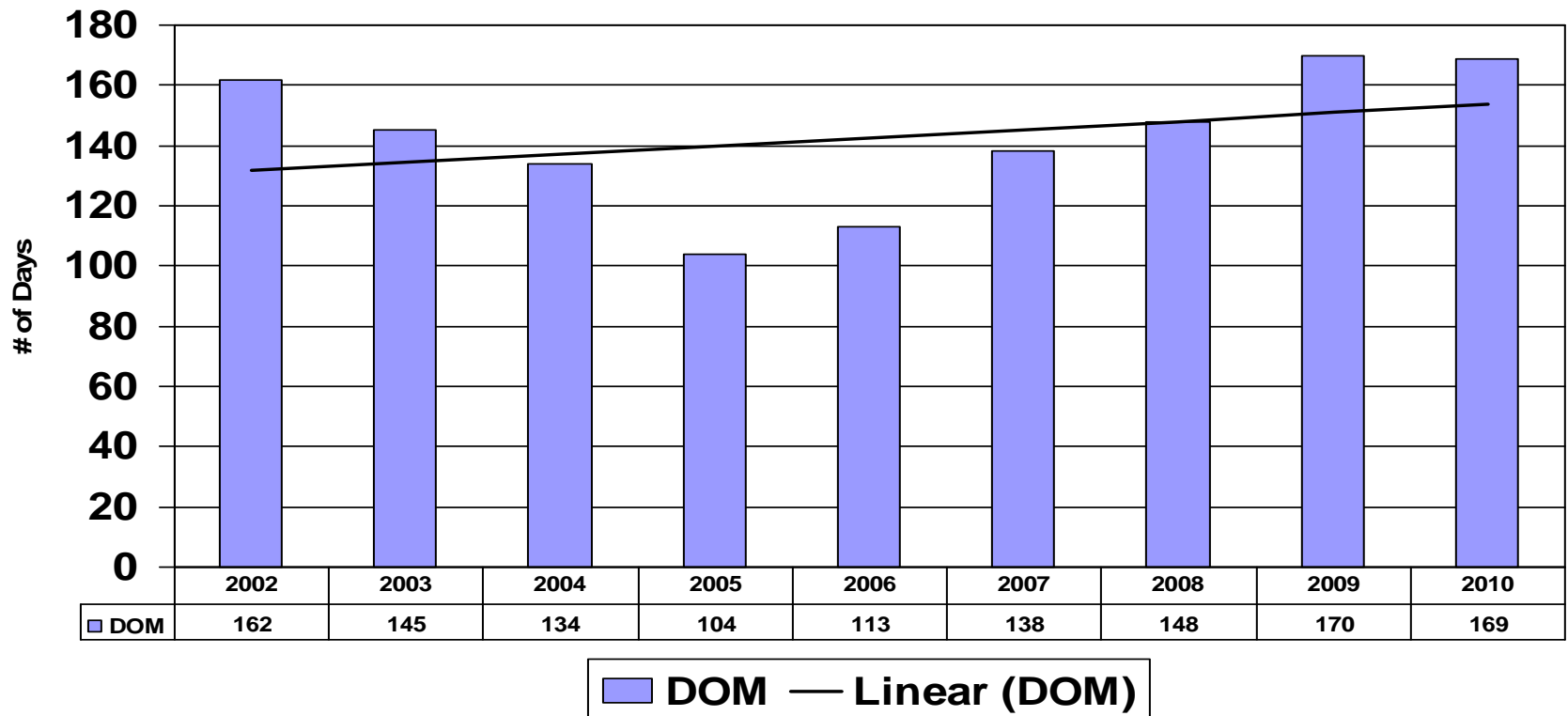
Mos. Of Inventory — Linear (Mos. Of Inventory)

Active Listings / Residential Listing Sold = Residential Inventory Ratio

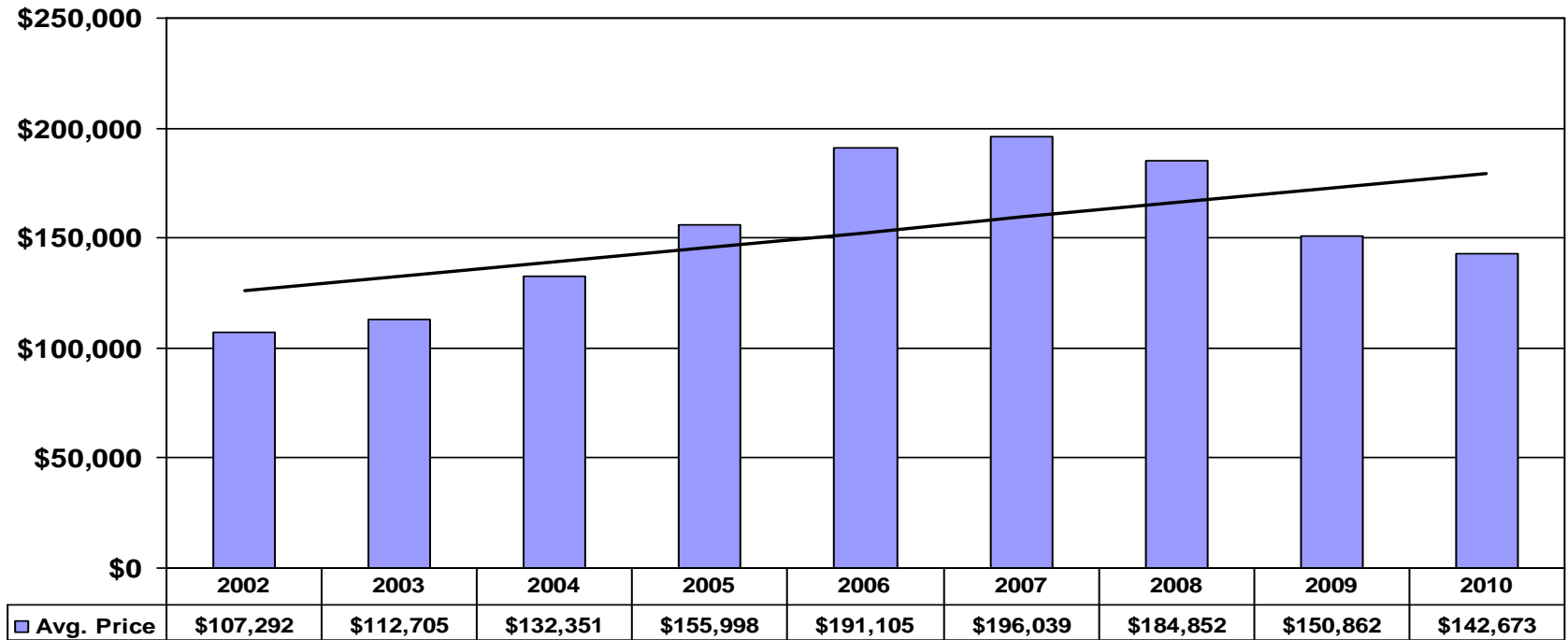
Residential Listings Sold YTD Ending 10/31



Average Days On Market YTD Ending 10/31



Average Sales Price YTD Ending 10/31



Avg. Price — **Linear (Avg. Price)**

Median Sales Price YTD Ending 10/31

